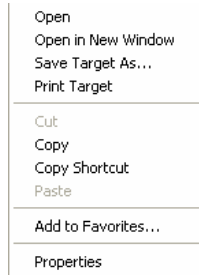
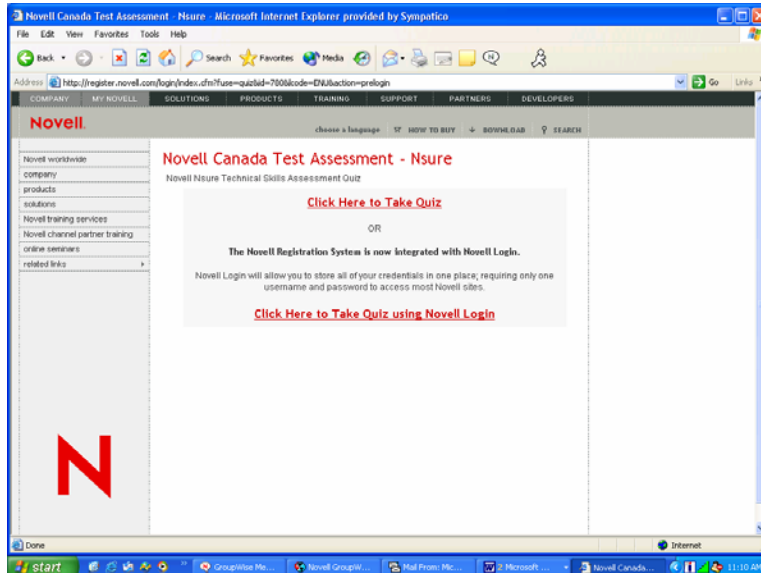


Novell's Online Technical Skills Assessment - Login Procedure

1. You will receive an e-mail that contains the Assessment url. You can reach the Login destination in one of two ways:
 - a. From the e-mail, click on the url. This should launch a web browser with the url in the Address line, taking you to the Login Screen of the Technical Skills Assessment (Picture 1).
 - b. With your mouse, right-click on the url, this will produce a quick menu that looks similar to this:

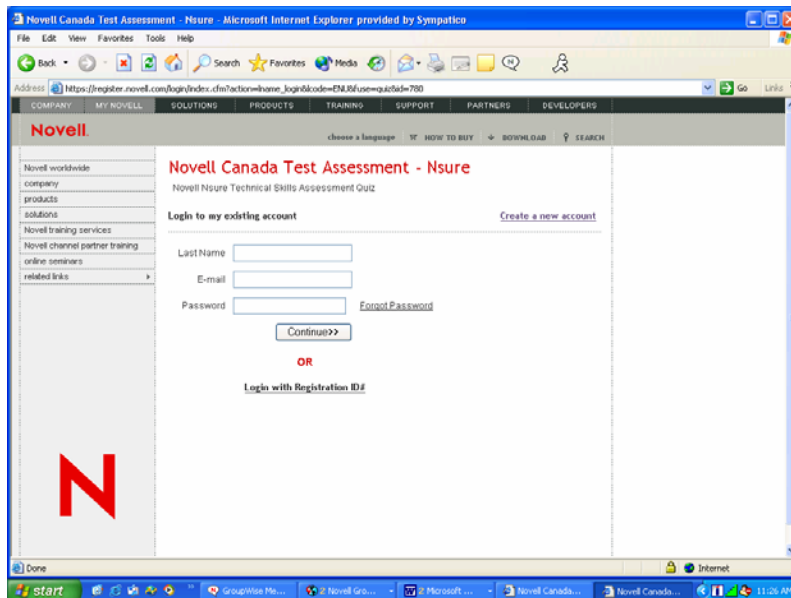


Move your mouse to the Copy Shortcut option. Launch a web browser and in the Address line, right click to produce a quick menu. Move your mouse to the Paste option. Press Enter. This will take you to the Login Screen of the Technical Skills Assessment (Picture 1).




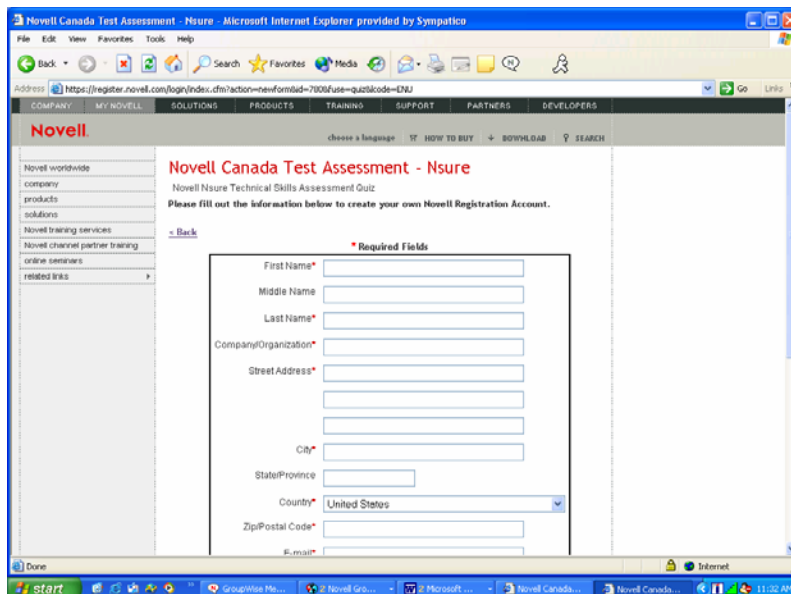
Picture 1 - Sample Login Screen of the Technical Skills Assessment

2. With your mouse, click on the link [Click Here to Take Quiz](#). This will take you to a screen that requires you to input information (Picture 2).

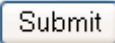
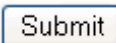


Picture 2 - Sample Login Page

3. There are two options for logging in:
 - a. If you have registered for an Assessment, Quiz or Course before, you may be able to login with your previously inputted information. In this case, complete the required information under the “Login to my existing account” header; fill in the information and then click on the  button.
 - b. If you have not created an account before, with your mouse, click on the [Create a new account](#) link. This will bring you to a page that requires you to input detailed information (Picture 3).



Picture 3 - Detailed Login Page

4. Once you have filled in all of the required information, you will need to click on the  button, at the bottom of the page.
5. This will bring you to a similar page as detailed in Picture 3 above. Confirm all of the information you inputted and scroll to the bottom of the page and click on the  button, once more.
6. The Assessment will now begin.